

Kitchen/Dining/Reception Room
16'11" x 24'4"

WC

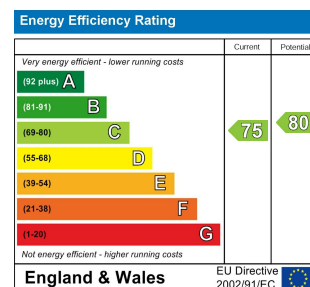
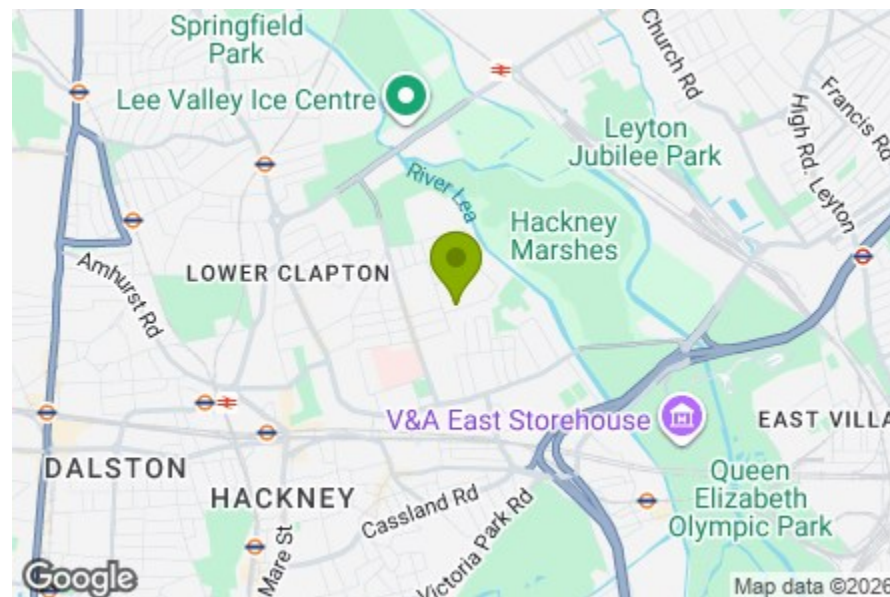
Bedroom
8'4" x 7'3"

Bedroom
10'8" x 14'3"

Bedroom
8'3" x 9'10"

Shower Room
8'3" x 5'3"

Balcony
13'6" x 5'6"



OVERBURY STREET, LONDON

Offers In Excess Of £475,000 Leasehold
3 Bed Flat



Features:

- Three Bedroom Apartment
- Arranged Over Two Floors
- Private West Facing Balcony
- Separate WC Downstairs
- Moments Away From Chatsworth Road
- Short Walk To Millfields Park and Hackney Marshes
- Approx 831 Square Foot

A light-filled three bedroom flat arranged over two floors, set just moments from Chatsworth Road and within easy reach of Homerton Station. With Millfields Park and Hackney Marshes close by, and a strong sense of local life woven through the surrounding streets, this is a well-connected and easygoing part of E5.

REQUEST A VIEWING
0208 520 3077

E11, E7, E12 & E15
hello11@stowbrothers.com
0203 397 2222

E4 & N17
hello4@stowbrothers.com
0203 369 6444

E17 & E10
hello17@stowbrothers.com
0203 397 9797

E18 & IG8
hello18@stowbrothers.com
0203 369 1818

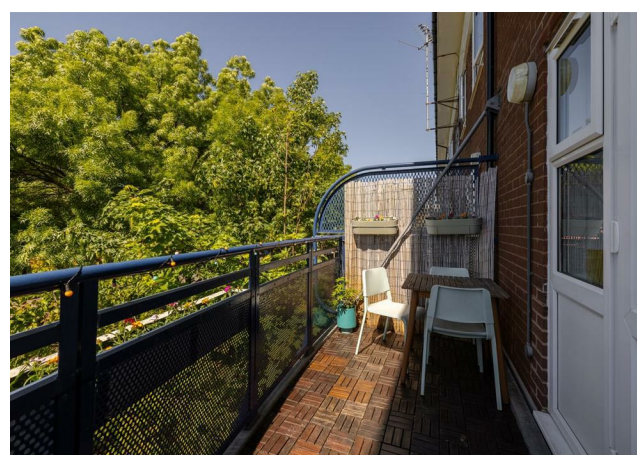
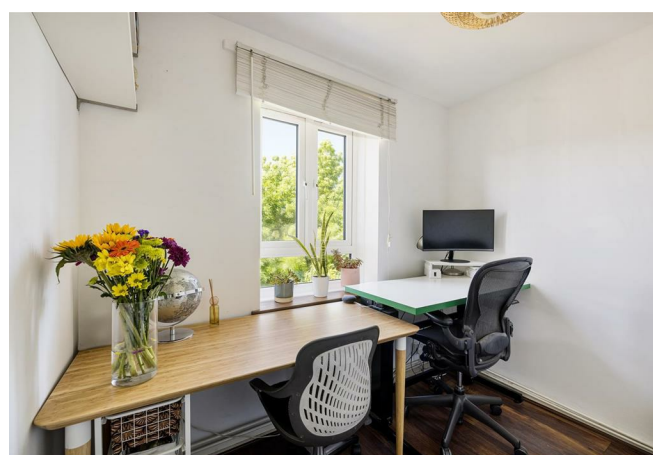
E8, E9, E5, N16, E3 & E2
hellohackney@stowbrothers.com
0208 520 3077

New Homes
newhomes@stowbrothers.com
0203 325 7227

Investment & Development
id@stowbrothers.com
0208 520 6220

Property Maintenance
propertymanagement@stowbrothers.com
0203 325 7228

STOWBROTHERS.COM
@STOWBROTHERS



IF YOU LIVED HERE...

Just off the hallway, the home opens into a generous, open-plan kitchen, dining and reception space that stretches across the lower floor. There is a natural sense of flow here, with each area comfortably defined yet connected, making it just as suited to slow mornings as it is to hosting. Wood flooring runs throughout, while the kitchen introduces patterned tiling and clean neutral cabinetry, bringing a subtle sense of character to the space.

At the far end, the reception area feels bright and relaxed, with large windows and glazed doors drawing in plenty of daylight. These lead out to the private west-facing balcony, offering a quiet spot for a drink in the afternoon sun. A separate WC is also positioned on this floor, neatly tucked away.

Upstairs, three bedrooms are arranged off the landing, two softly carpeted and the third finished with wooden flooring, all simply styled with light walls and a calm, easy feel. The proportions are well judged, offering flexibility whether you need space to work

from home or room to unwind. The shower room is also located on this level, keeping everything practical and well organised.

WHAT ELSE?

Homerton Station is a short walk away, offering Overground connections across East London.

Chatsworth Road is close by, known for its Sunday market, along with Fika Coffee, Leo's and The Castle Cinema. Not far from there, The Elderfield is a much-loved local pub for relaxed evenings out.

Millfields Park and Hackney Marshes are both within easy reach, offering wide open green space, riverside walks and a welcome sense of calm.



A WORD FROM THE OWNER...

"We have absolutely loved living in this flat! Our perfect day has always been going for a walk down the canals to Hackney Wick or Clapton, and we love Chatsworth Road especially for the Sunday market. There is a fantastic park within a ten minute walk in any direction from our place, and we love being so close to so many great gig venues. Despite being in zone 2 and in the centre of Hackney, it feels like you are always surrounded by nature. The Elderfield, Adam and Eve and Crooked Billet pubs are great local neighbourhood pubs that feel like an extension of our front room. The high street is full of great local independent shops and eateries. Our neighbours are all fantastic and we have a lovely community in the area."

REQUEST A VIEWING
0208 520 3077

FOLLOW US ➔ @STOWBROTHERS
STOWBROTHERS.COM